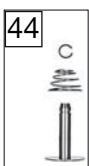
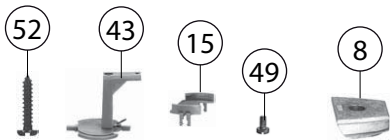
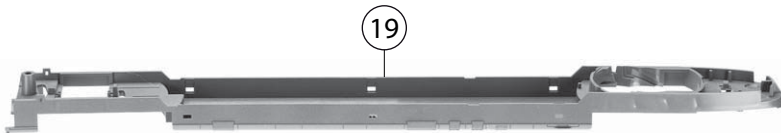
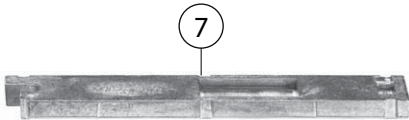
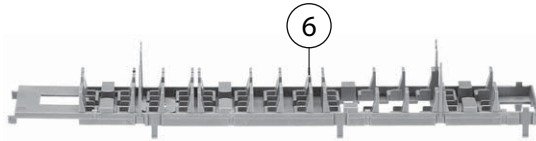
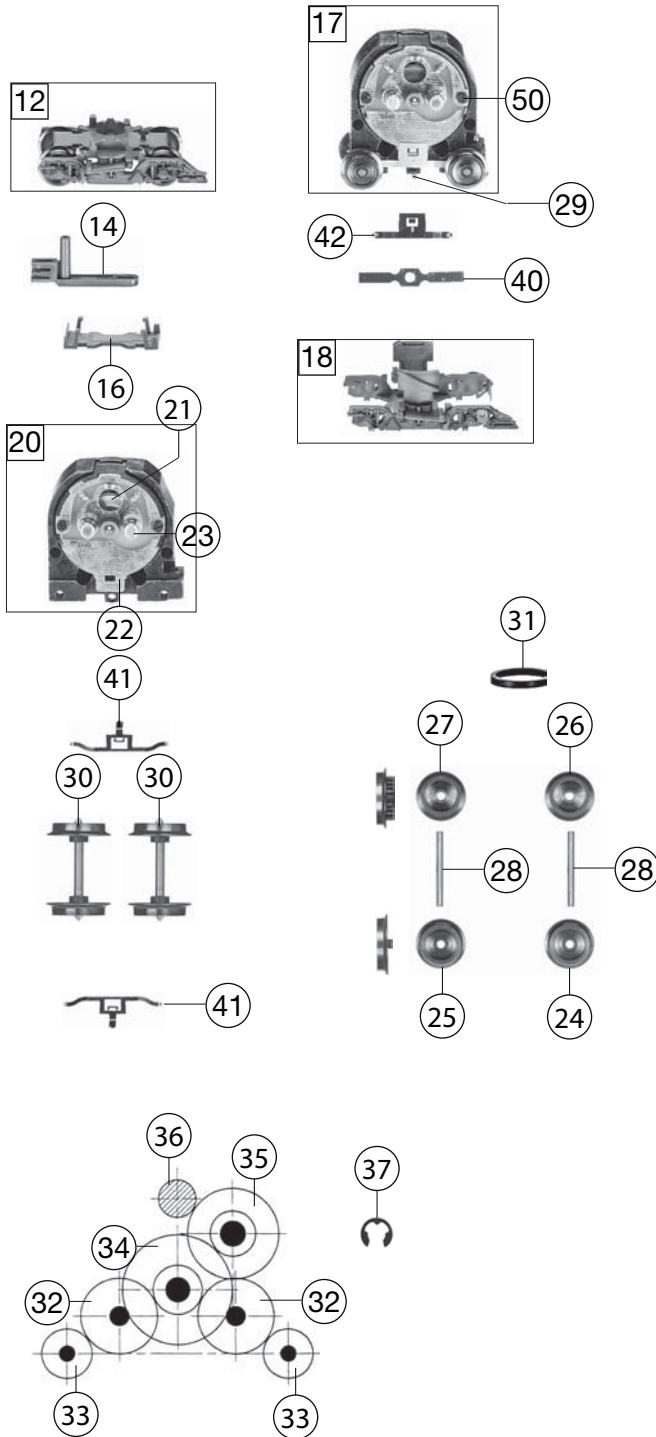


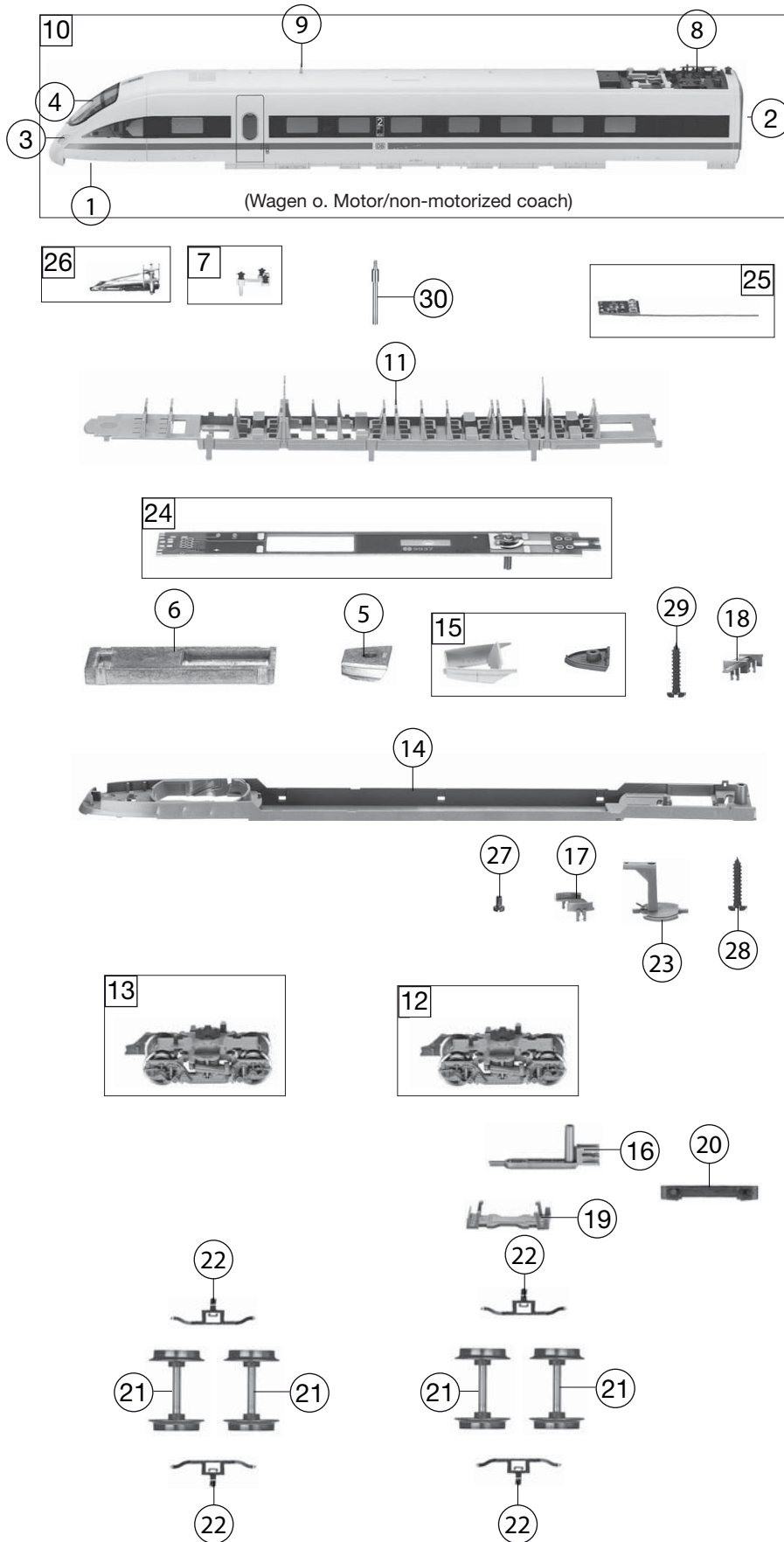
(Motorwagen//Motor coach)



446001 BR 411/411.5 DB		411007-8+ 411507-7	=	HO
Pos. Nr. Pos.no.	Beschreibung Description	Art.-Nr. Art.no.	Preisgruppe Price bracket	
1	LOKGEHÄUSE FÜR ENDWAGEN MIT MO Motor coach body	10446001	036	
2	FUEHRERSTAND M.LOKFUEHRER ICT Driver's cab inset, with driver	01244601	014	
3	FALTENBALG F.ICT Gangway bellows	00125113	006	
4	LICHTLEITER-SATZ ICE-T Light conductor set	01344601	013	
5	STIRNFENSTER ICE-T Front window	01444601	015	
6	INNENEINRICHT.F.TK M.MOT ICE T Interior fittings for motor coach	01544601	012	
7	BESCHWERUNG F.4460-2 M.MOTOR Ballast for motor coach	00164460	016	
8	BESCHWERUNG AM BUG F. 4460 ICT Bow ballast	01644601	012	
9	ISOLATORENAUFN.M.ISO.F.ICE-T Pantograph carrier with isolators	00174460	013	
10	ISOLATOREN M.TRAVERSE-SATZ Set of isolators&traverse	01844601	013	
11	ANTENNE Antenna	00194706	002	
12	DREHGEST.K HINT.F.4460 TRIEBK. Rear bogie for motor coach	03144601	014	
13	FRONTSPOILER-SATZ Front spoiler set	00364460	013	
14	KUKU-DEICHSEL ICT Short coupling reception	00384021	006	
15	DREHGEST.AUFN./HINTEN 4460-2-3 Bogie suspension plate	00384460	009	
16	DEICHSEL-ABDECKUNG F 4460-4465 Shaft cover plate	00385512	007	
17	MOTORDREHGESTELL F.ICE-T Motor bogie	04044601	035	
18	DREHGESTELLRAHMEN F.4044601 Bogie framework	04144601	011	
19	GEHAEUSE-UNTERTEIL F.4460-2 Floor plate for motor coach	04344601	013	
20	MOTOR M.SCHWUNGMASSE F.ICE-T Motor with flywheel	05044601	033	
21	ANKER KPL.M.SCHWUNGMASSE Rotor with integrated flywheel, complete	00504607	025	
22	LAGERSCHILD ISOL.F.ICT 4460 Motor PCB, insulated	00504728	018	
23	KOHLENROHRKAPPE Brush pipe cap	00504801	002	
24	L.SCHEIB.RAD O.Z.O.N.ISO 4460 Loco wheel w/o gear, w/o. trac. tyre, insulated	00514352	006	
25	L.RAD O.Z.M.N.ISOL. F.4460-2 Loco wheel w/o gear, with trac. tyre, insulated	00514353	006	
26	L.RAD O.Z.M.N. F.4460-2 Loco wheel w/o gear, with trac. tyre	00514354	005	
27	L.RAD O.Z.O.N. F.4460-2 Loco wheel w/o gear, w/o. trac. tyre	00514355	005	
28	ACHSE Axle	00524011	001	
29	ACHSE F.4460 L=19 MM Axle l=19mm	00524013	003	
30	RADSATZ O.Z.O.N.F.ICT U.WAGEN Wheel w/o gear, w/o. trac. tyre for loco&coaches	00534078	007	
31	HAFTREIFEN Traction tyre	00547004	001	
32	ZAHNRAD Z:20 SCHWARZ Gear wheel Z:20, black	00564136	002	
33	ZAHNRAD Z:13 MS F.4460-2 Gear wheel Z:13, brass	00564169	005	
34	ZAHNRAD Z:13/29 Gear wheel Z:13/29	00564170	006	
35	ZAHNRAD Z:12/24 SCHWARZ Gear wheel Z:12/24, black	00564171	006	
36	RITZEL Z:10 Gear wheel Z:10	00564602	004	
37	SICHERUNGSRING KLEIN Securing ring, small	00564701	001	



446001 BR 411/411.5 DB		411007-8+ 411507-7	=	HO
Pos. Nr. Pos.no.	Beschreibung Description	Art.-Nr. Art.no.	Preisgruppe Price bracket	
	UNTERLEGSCH. 2,3 X 5 X 0,1 (o. Abb.) Washer (w/o illustr.)	00564747	001	
	UNTERLEGSCH. ROT 2,2X5X0,3 (o. Abb.) Washer, red (w/o illustr.)	00564751	001	
40	BELEUCHTUNGSFEDER H0 Light contact spring	00614919	002	
41	KONTAKTFEDER Contact spring	00614942	001	
42	MOTORSTROMABNEHMER Motor contact clip	00614957	001	
43	STROMABN.AUFNAHME M.KONT. Pantograph carrier support, with contacts	00634460	012	
44	KONTAKTPILZGARNITUR L:12 MM Contacter pin assembly	00644404	011	
45	SCHALTPL.M.UMSCHALTER TK 1 ICT PCB with overhead catenary switch	00654067	024	
46	SCHALTPLATTE F.BEL.TK 1 ICE-T PCB for illumination	00654114	020	
47	SCHNITTST.-BLINDSTECKER 8-POL. Jumper, 8-pin	00664001	012	
48	EINHOLMPANTO.F.ICT 4460 Single arm pantograph	00674326	021	
49	SCHRAUBE M 1,4 X 3 Screw M1.4x3	00700203	001	
50	SCHRAUBE Screw	00700313	001	
51	BLECHSCHRAUBE 2,2X9,5 BRÜN. Tapping screw	00713509	001	
52	SCHRAUBE Screw	00713513	001	
53	GEWINDESTANGE F.ICT TRIEBKÖPFE Threaded axle	00730557	006	
	FIXIERFEDER F.ICT+WAGEN (o. Abb.) Fixation spring (w/o illustr.)	00764019	006	
	ERSATZ-SCHLEIFKOHLEN (o. Abb.) Carbon brushes (w/o illustr.)	6519	---	



446001		BR 411/411.5 DB	411007-8+ 411507-7	=	HO
Pos. Nr. Pos.no.	Beschreibung Description	Art.-Nr. Art.no.	Preisgruppe Price bracket		
1	FUEHRERSTAND M.LOKFUEHRER ICT Driver's cab inset, with driver	01244601	014		
2	FALTENBALG F.ICT Gangway bellows	00125113	006		
3	LICHTLEITER-SATZ ICE-T Light conductor set	01344601	013		
4	STIRNFENSTER ICE-T Front window	01444601	015		
5	BESCHWERUNG AM BUG F. 4460 ICT Bow ballast	01644601	012		
6	MITTELBESCHWERUNG F.4460-3 O.M Ballast for non-motor coach	01644602	014		
7	ISOLATORENAUFN.M.ISO.F.ICE-T Pantograph carrier with isolators	00174460	013		
8	ISOLATOREN M.TRAVERSE-SATZ Set of isolators&traverse	01844601	013		
9	ANTENNE Antenna	00194706	002		
10	WAGENKASTEN F. ENDWAGEN OHNE M Non-motor coach body	20446081	036		
11	INNENEINRICHTUNG F. ENDWAGEN O Non-motor coach body interior fittings	25446081	012		
12	DREHGESTELL K F.4460-2 HINTEN Rear bogie for non-motor coach	03144602	014		
13	DREHGESTELL K F.4460-2 VORNE Front bogie for non-motor coach	03144603	014		
14	GEHAEUSE-UNTERTEIL F.4460-3 Floor plate for non-motor coach	00334460	014		
15	FRONTSPOILER-SATZ Front spoiler set	00364460	013		
16	KUKU-DEICHSEL ICT Short coupling reception	00384020	006		
17	DREHGEST.AUFN./HINTEN 4460-2-3 Bogie suspension plate, rear	00384460	009		
18	DREHGEST.AUFN./VORNE 4460-3 Bogie suspension plate, front	03844601	008		
19	DEICHSEL-ABDECKUNG F 4460-4465 Shaft cover plate	00385512	007		
20	KUPPELSTANGE F.ICE Coupling rod	00386006	008		
21	RADSATZ O.Z.O.N.F.ICT U.WAGEN Wheel w/o gear, w/o. trac. tyre for loco&coaches	00534078	007		
22	KONTAKTFEDER Contact spring	00614942	001		
23	STROMABN.AUFNAHME M.KONT. Pantograph carrier support, with contacts	00634460	012		
24	SCHALTPLATTE M.UMSCHALTER 4460 PCB with overhead catenary switch	00654070	018		
25	LEITERPLATTE F.DREILICHT-SPITZ PCB for triple headlight	65414900	023		
26	EINHOLMPANTO.F.ICT 4460 Single arm pantograph	00674326	021		
27	SCHRAUBE M 1,4 X 3 Screw M1.4x3	00700203	001		
28	BLECHSCHRAUBE 2,2X9,5 BRÜN. Tapping screw	00713509	001		
29	SCHRAUBE Screw	00713513	001		
30	GEWINDESTANGE F.ICT TRIEBKÖPFE Threaded axle	00730557	006		
		00764019	006		