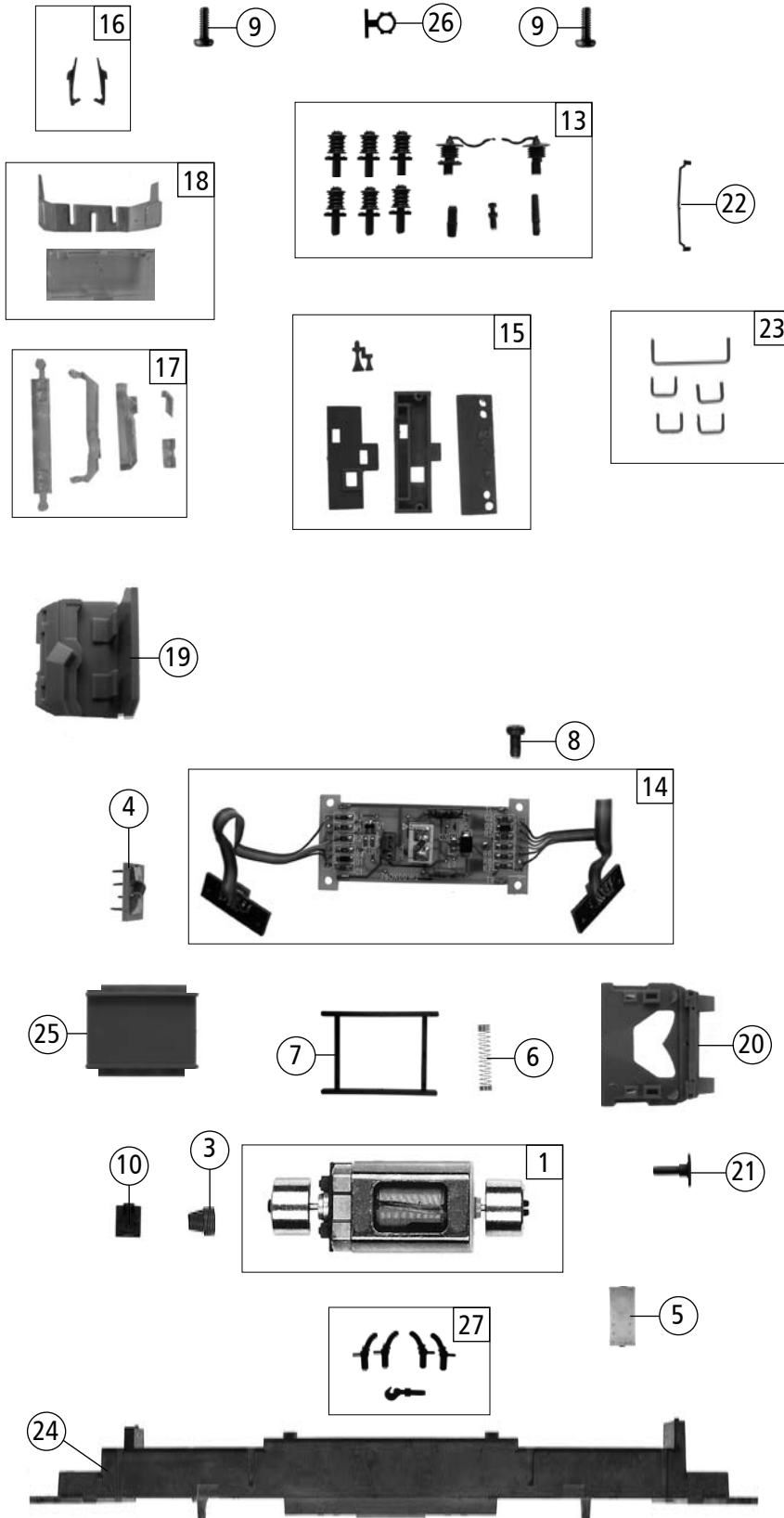
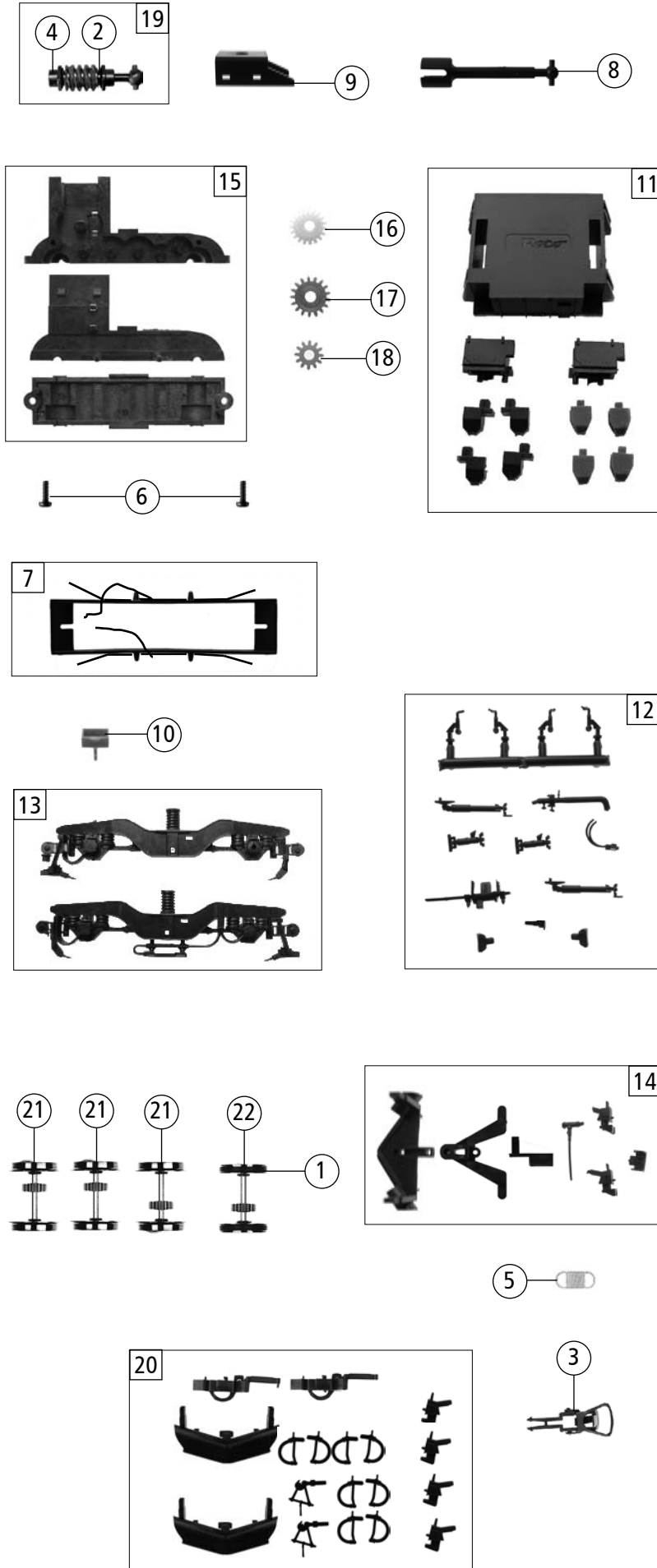


11 **72482** Railion BR 152.0

| Pos. Nr. Pos.no. | Beschreibung Description | Art.-Nr. Art.no. | Preisgruppe Price bracket |
|---------------------|--|---------------------|------------------------------|
| 1 | Motor Motor | 85111 | 28 |
| 2 | Stromabnehmer DSA 150 grau Pantograph DSA 150 grey | 85463 | 19 |
| 3 | Kardanschale Cardn bearing | 87129 | 4 |
| 4 | Brückenstecker Strapping plug | 125666 | 9 |
| 5 | Motordämpfer Motor attenuator | 113376 | 4 |
| 6 | Kontaktfeder Contact spring | 116812 | 3 |
| 7 | Motorabdeckung Motor cover | 121566 | 3 |
| 8 | Schraube M2x4 Screw M2x4 | 114877 | 3 |
| 9 | Schraube M1,6x6 Screw M1,6x6 | 114836 | 3 |
| 10 | Drahtabdeckung Conductor cover | 122813 | 4 |
| 11 | Gehäuse kpl. Betr.nr. 152 089-9 Body ass. No. 152 089-9 | 133925 | 34 |
| 12 | Lüftergitter Roof fan grills | 127452 | 4 |
| 13 | Isolatorsatz Insulator set | 127453 | 8 |
| 14 | Platine kpl. Printed circuit ass. | 127454 | 28 |
| 15 | TS - Lichtabdeckung + Horn Part set light cover + horn | 127458 | 7 |
| 16 | TS - Scheibenwischer Part set wipers | 127474 | 6 |
| 17 | TS - Lichtleiter Part set transmission light bar | 127475 | 7 |
| 18 | TS - Fenster Part set window | 127476 | 8 |
| 19 | Führerstand Drivers cab | 127477 | 6 |
| 20 | Pufferbrüst Buffer breast | 127524 | 6 |
| 21 | Puffer Buffer | 127527 | 3 |
| 22 | Handgriff Handhold | 127536 | 3 |
| 23 | TS - Griffstangen Part set handle bar | 127537 | 7 |
| 24 | Grundrahmen Base frame | 127539 | 17 |
| 25 | Decoderabdeckung Decoder cover | 127545 | 5 |
| 26 | Anschlag Block | 127616 | 3 |
| 27 | TS - für Pufferbrüst für Betrieb Part set for Buffer breast for running | 127630 | 4 |



Änderungen in Konstruktion und Ausführung vorbehalten
We reserve the right to change the construction and specification



| 72482 Railion BR 152.0 | | | |
|------------------------|---|---------------------|------------------------------|
| Pos. Nr. Pos.no. | Beschreibung Description | Art.-Nr. Art.no. | Preisgruppe Price bracket |
| 1 | Haftringsatz 10Stk 12,9-14,6mm Set with traction tire 10pieces | 40070 | --- |
| 2 | Beilagscheibe Washer | 86108 | 3 |
| 3 | Standardkupplung Standard coupling | 89246 | 6 |
| 4 | Schneckenachslager Worm axle bearing | 89749 | 6 |
| 5 | Kupplungsfeder Coupling spring | 109832 | 3 |
| 6 | Schraube M1,6x4 Screw M1,6x4 | 114850 | 3 |
| 7 | Kontakthalter kpl. Contact holder ass. | 122818 | 9 |
| 8 | Kardanwelle Cardan shaft | 122821 | 4 |
| 9 | Schneckendeckel Worm cover | 122822 | 4 |
| 10 | Treppe Side step | 127459 | 4 |
| 11 | TS - Sandbox + Werkzeugkasten Part set | 127466 | 9 |
| 12 | TS - Fahrgestell Part set chassis | 127525 | 10 |
| 13 | TS - Drehgestellblende Part set bogie | 127526 | 12 |
| 14 | Teilesatz Part set | 127534 | 10 |
| 15 | Getriebesatz Part set gear | 127538 | 13 |
| 16 | Schneckenzahnrad gelb Worm gear yellow | 127540 | 5 |
| 17 | Zahnrad Z=17/0.4 G Gear Z=17/0.4 G | 127541 | 4 |
| 18 | Zahnrad Z=12 Gear Z=12 | 127542 | 4 |
| 19 | Schneckensatz kpl. Set worm gear ass. | 127561 | 13 |
| 20 | Zurüstbeutel Bag with accessories | 127544 | 11 |
| 21 | Radsatz m. Zahnrad o. Haftring aussen Wheelset w. gear without traction tyre | 134605 | 11 |
| 22 | Radsatz m. Zahnrad m. Haftring Wheelset w. gear w. traction tyre | 134606 | 12 |

Ersatzteile erhalten Sie bei Ihrem Fachhändler, oder Ihrer Landesvertretung:
You can order your Replacement Parts at your local dealer, your country representative: